



Artist: CHANTAL LEBLANC & AMG School 2018



**BLACK  
& CREEK  
COMMUNITY  
FARM**

**JANE FINCH**  
CENTRE  
Community Matters



  
Greenbelt  
Markets

**HOSPITALITY  
WORKERS  
TRAINING  
CENTRE**




  
CultureLink  
Your new Canadian life starts here.

**YSM**  
YONGE STREET MISSION

  
UPSTREAMLAB

  
WORKERS' ACTION CENTRE

  
Afri-Can  
FoodBasket

mabelle  
arts 

  
Toronto Community  
Benefits Network

  
Building Up

**FURNITURE BANK**

**EAST SCARBOROUGH  
STOREFRONT**  
Project of  MakeWay

  
CAREERS  
EDUCATION  
EMPOWERMENT  
CENTRE FOR YOUNG BLACK PROFESSIONALS

  
Mothercraft®  
Shaping Children's Lives Through Learning

  
oeerc  
The Ontario Employment  
Education and Research Centre

  
**BUILDING  
TENNIS COMMUNITIES**  
Jane - Finch

  
Parkdale  
Neighbourhood  
Land Trust

  
Vivimos Juntos, Comemos Juntos  
We Live Together, We Eat Together

  
The Learning Enrichment  
FOUNDATION

  
aeceo  
Association of Early Childhood Educators Ontario

  
TORONTO  
SHELTER  
NETWORK

  
JUMPSTART  
REFUGEE  
TALENT

*Flaunt it*

  
Caregivers  
Action Centre

  
john  
howard  
society  
Ontario

  
BLACK  
URBANISM  
TORONTO

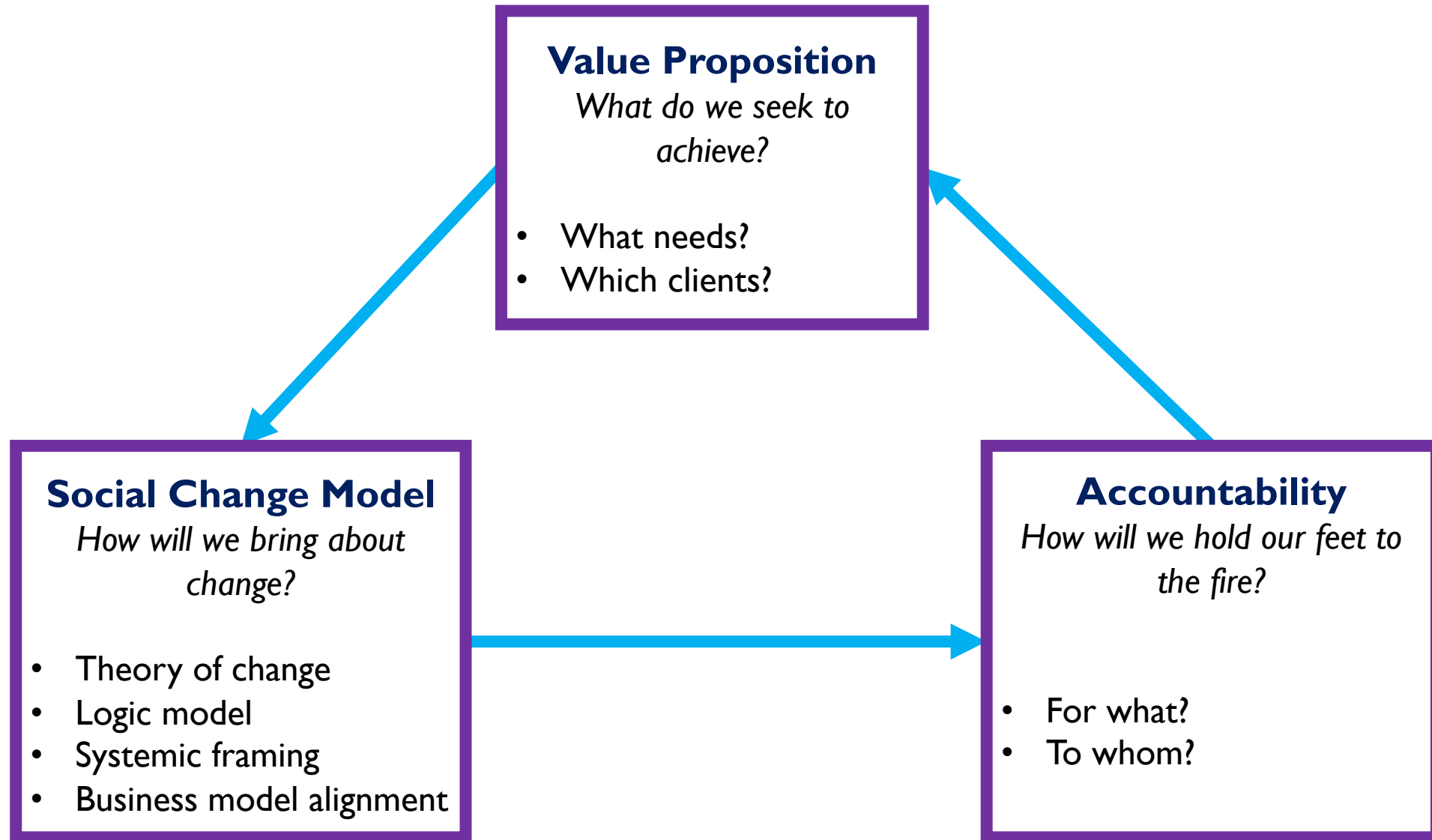
**THE  
LOCAL**

**Better  
Way  
Alliance  
.ca**

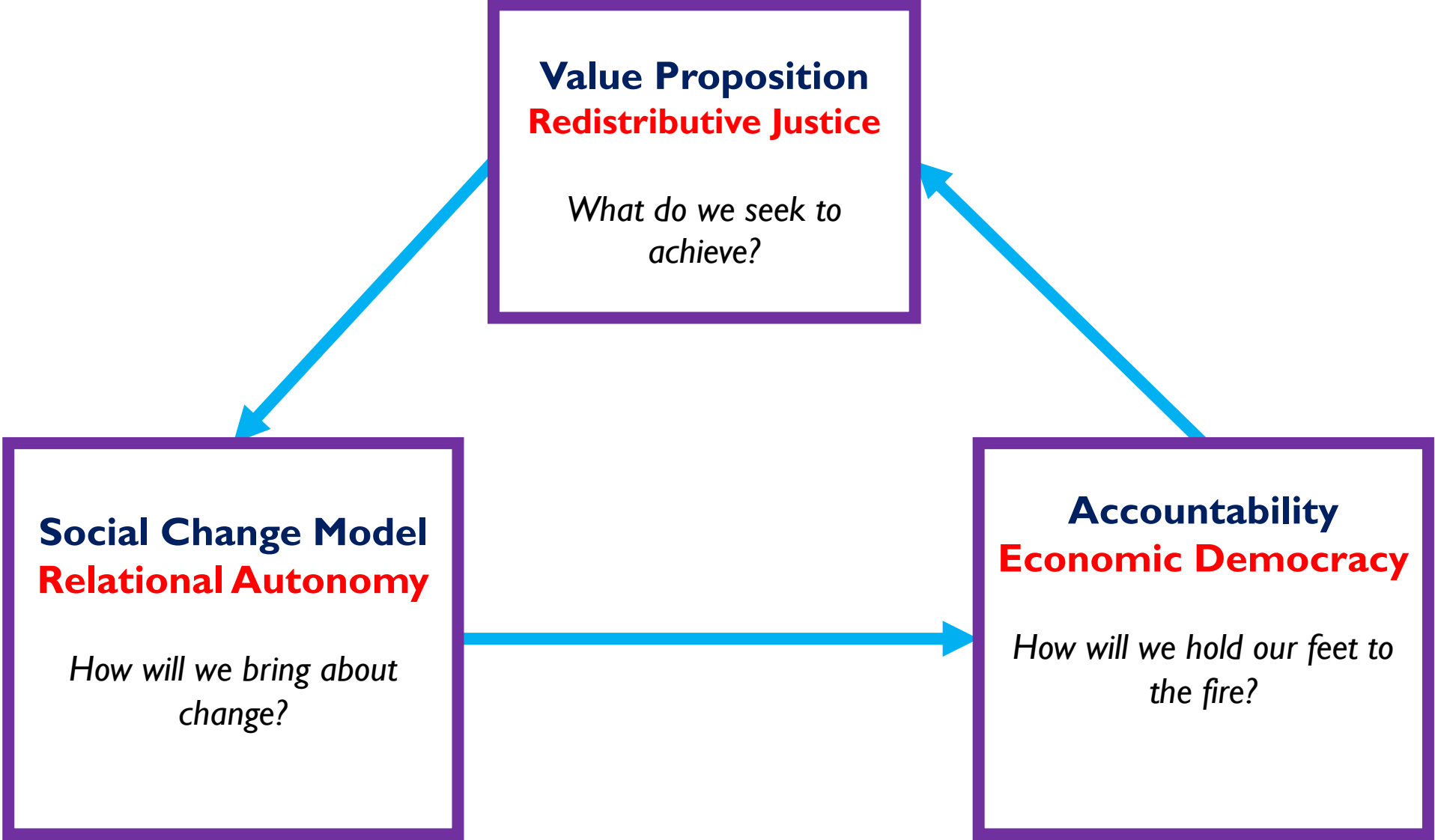
**WEST**  
NEIGHBOURHOOD  
HOUSE  
Formerly St. Christopher House

  
PARKDALE  
QUEEN WEST  
Community  
Health Centre

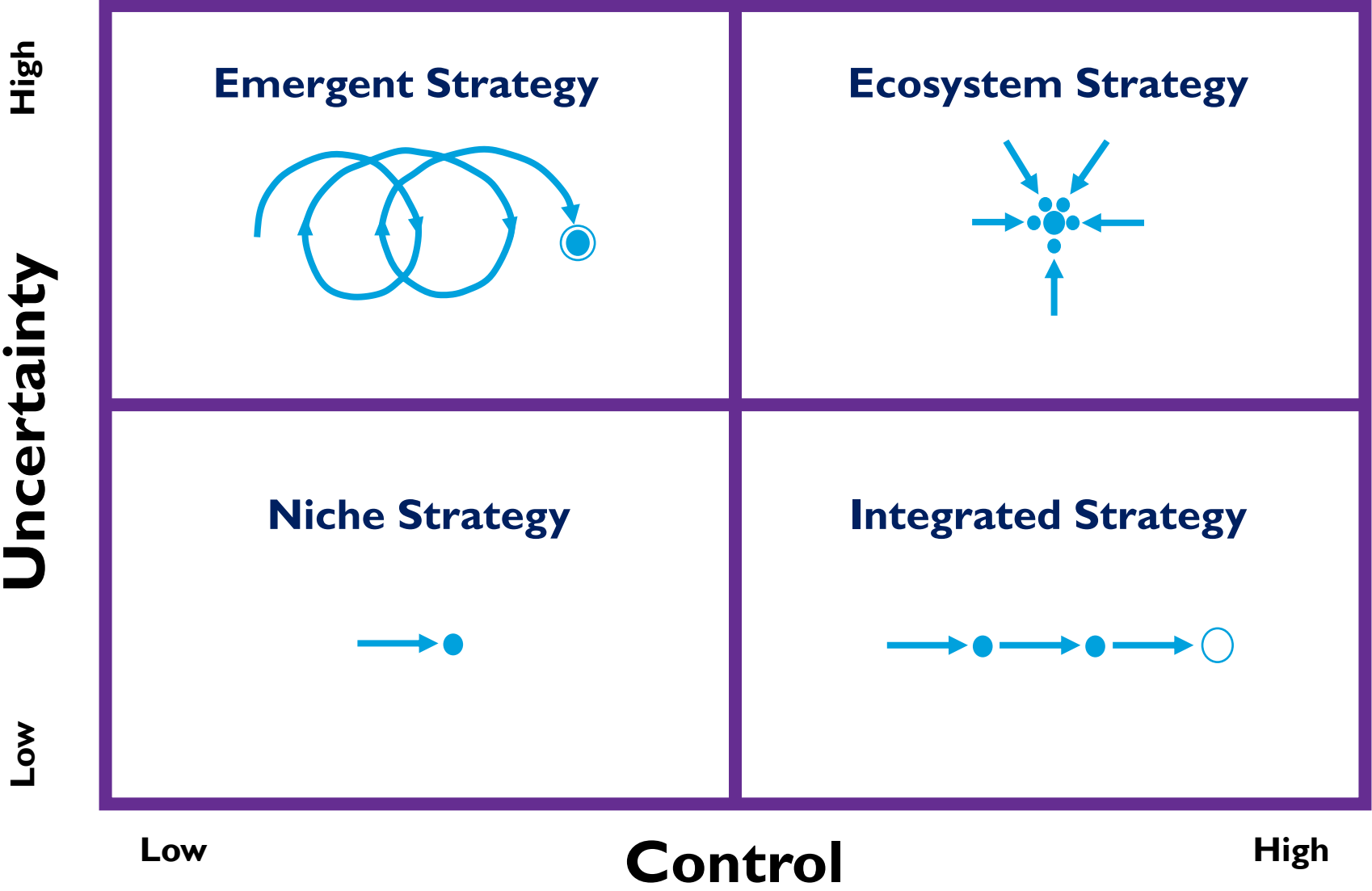
# Core Components of Social Performance



# Social and Solidarity Economy Components

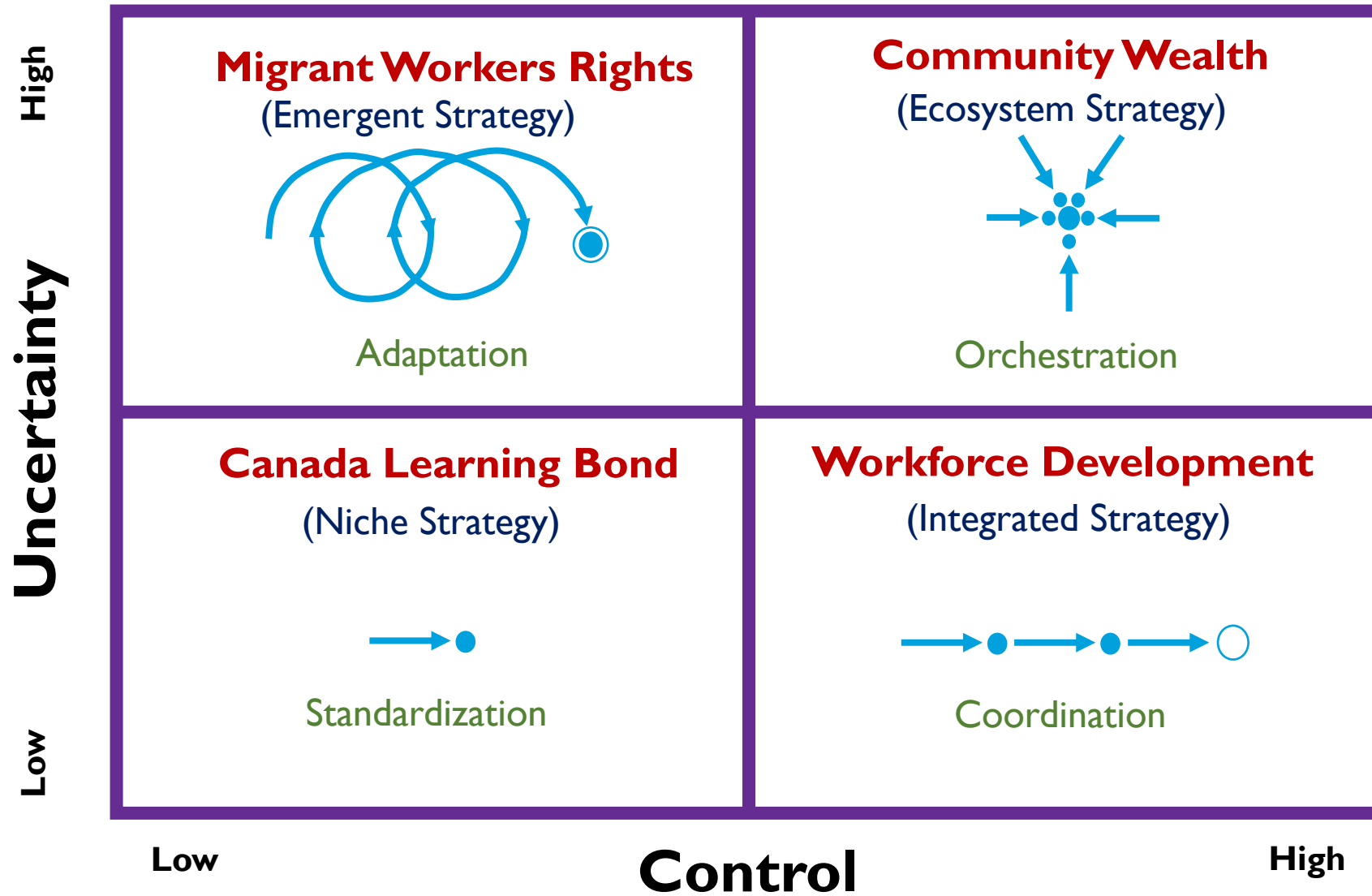


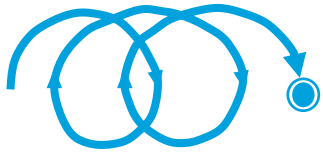
# Contingency Framework for Social Performance



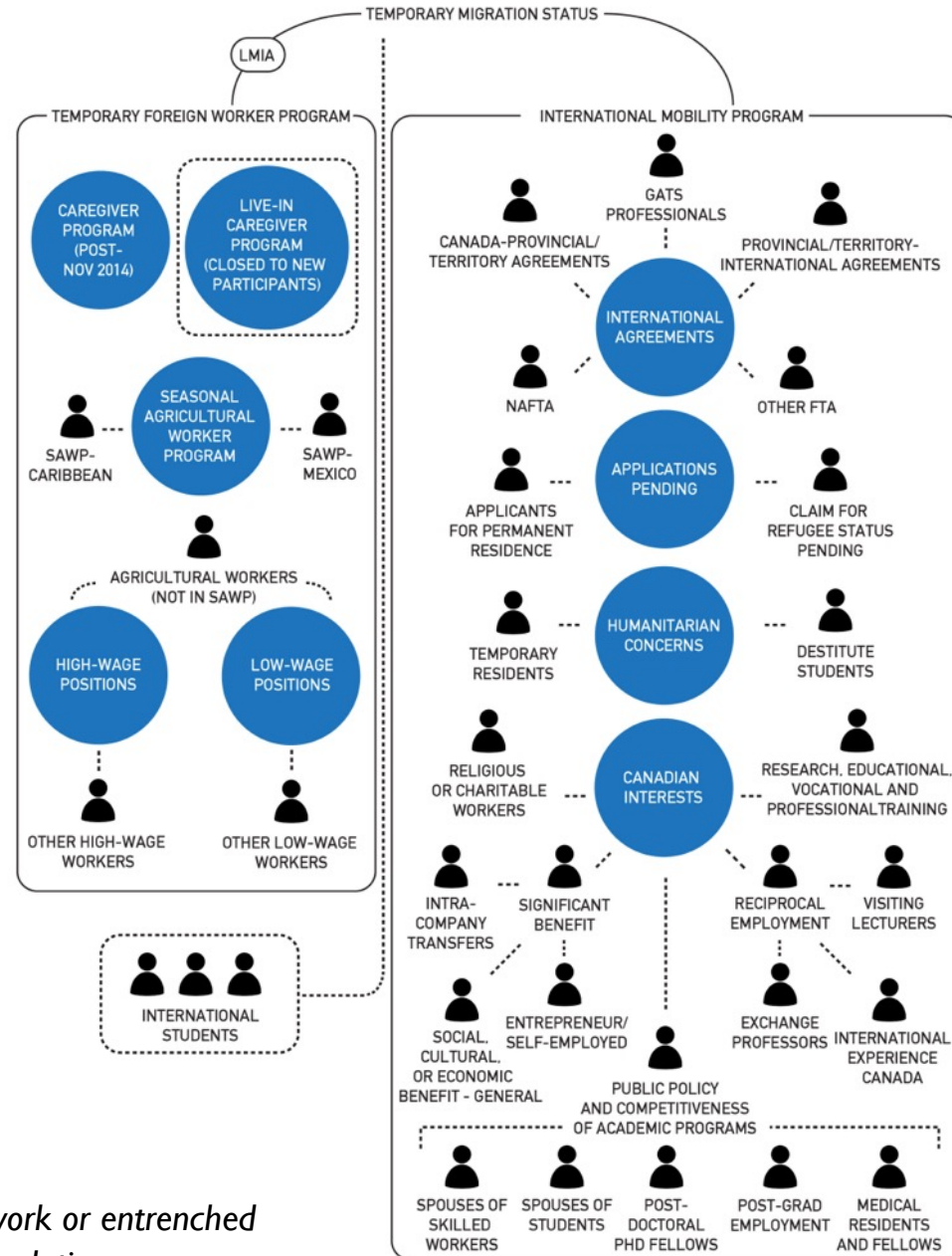
Source: Ebrahim, Alnoor (2019). *Measuring Social Change: Performance and Accountability in a Complex World*. Stanford University Press.

# Stories by Strategy

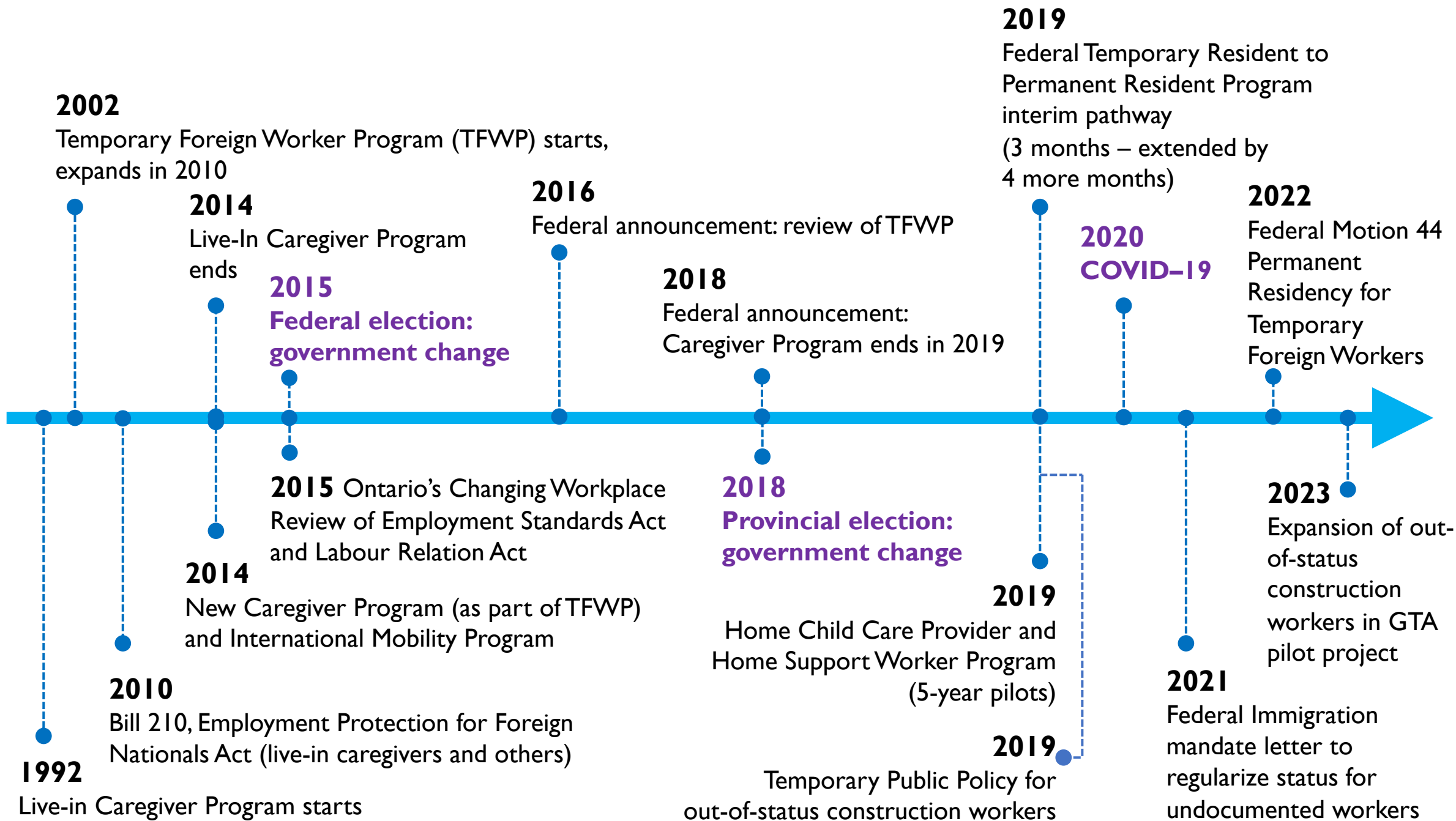




## Labour Migration Programs



Source: Faraday, Fay (2016). *Canada's Choice: Decent work or entrenched exploitation for Canada's migrant workers?* Metcalf Foundation.





---

# Canada's Choice

JUNE 2016

Decent work or entrenched exploitation for  
Canada's migrant workers?

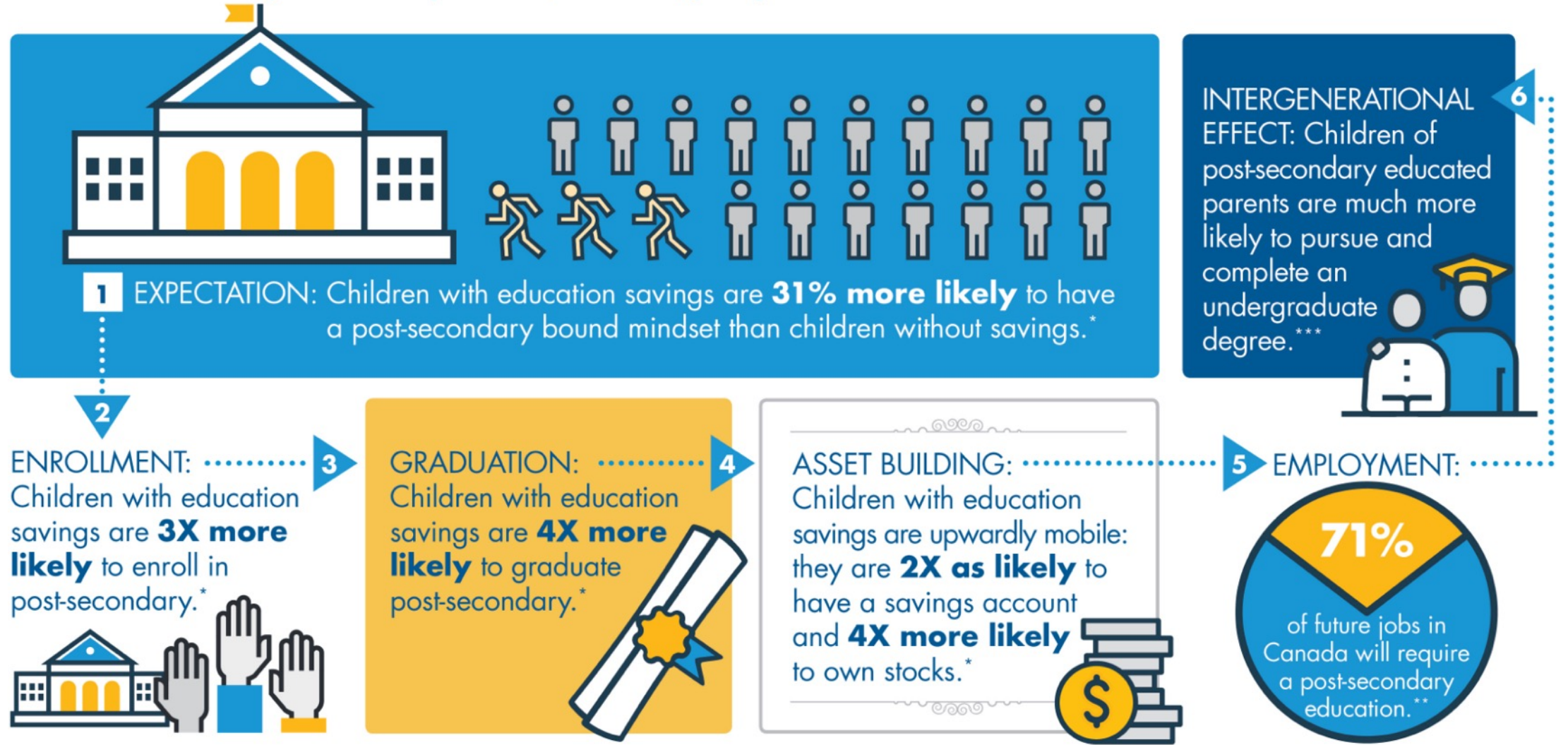
by Fay Faraday



**METCALF**  
**FOUNDATION**

INCLUSIVE LOCAL ECONOMIES

# Education savings have a positive, life-long impact on children from modest-income households.



SOURCES: \*Breaking the Pattern of Wealth Inequality in Higher Education. University of Kansas, Center on Assets Education, and Inclusion. 2018. \*\*2016 CESP Annual Statistical Review. Government of Canada website. \*\*\*First-Generation Students College Access, Persistence, and Post bachelor's Outcomes. Stats in brief: U.S. Department of Education. February 2018.

**Start your kid's  
education savings with  
FREE MONEY.**

  
SmartSAVER.org

*It's never been easier.*

## National Canada Learning Bond Beneficiaries

Year	2015	2016	2017	2018	2019	2020
SmartSAVER applications FROM STARTMYRESP + MYSMARTFUTURE	3,092	4,466	4,996	6,321	12,494	13,838
Percentage growth over previous year		44.44%	11.87%	26.52%	97.66%	10.76%

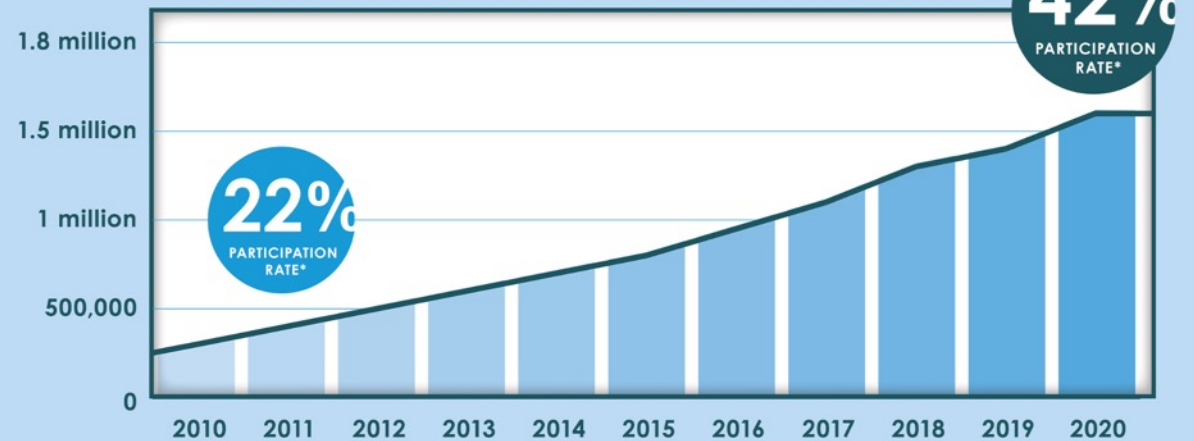
**THANKS**  
TO THE  
**80 PARTNERS**  
WHO  
**HELPED US**

FROM  
**200,000**

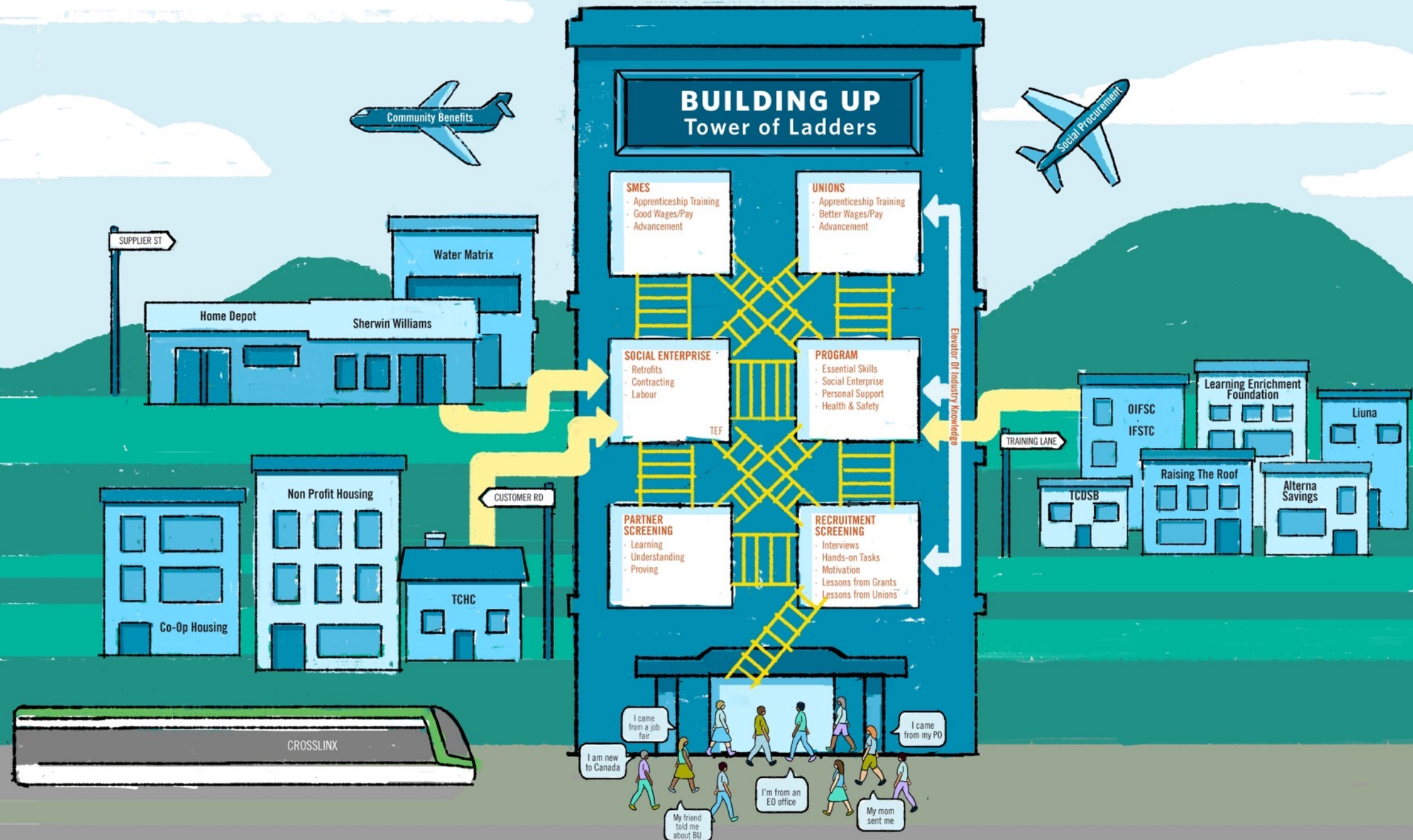
TO  
**1.6 MILLION**

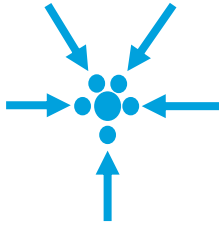
IN  
**10 YEARS**

### Number of CLB Beneficiaries







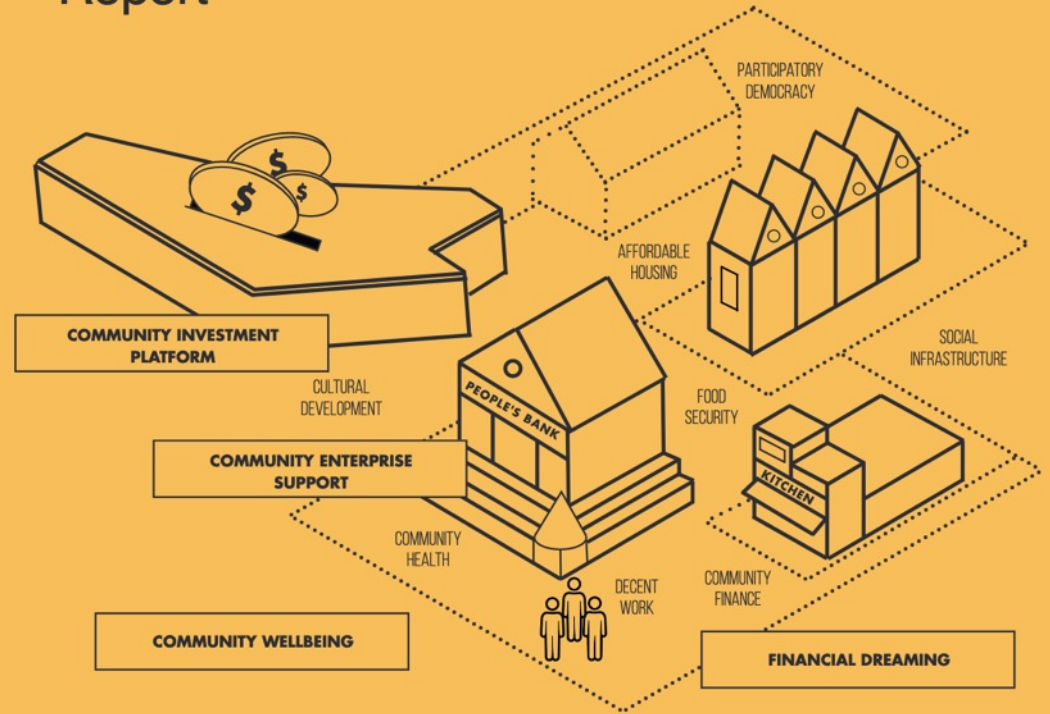


**DECENT WORK**   **AFFORDABLE HOUSING**   **CULTURAL DEVELOPMENT**   **COMMUNITY FINANCE**   **COMMUNITY HEALTH**   **PARTICIPATORY DEMOCRACY**   **FOOD SECURITY**   **INTER FAITH**

*The Parkdale People's Economy has nine working groups for community action and policy (PCED 2019).*

# Parkdale Community Wealth Building

## Community Financing Report



Strengthening the neighbourhood economy through equitable and inclusive community funding in Parkdale.



parkdalelandtrust • [Follow](#)

**parkdalelandtrust** We are happy to announce that the Neighbourhood Land Trust has acquired a 15 unit at-risk bachelorette building in South Parkdale! Against all odds we have removed this property from the private market to assure that the tenants will be safe from harassment, above guideline rent increases and renovations. Instead, under community ownership, we will provide strong security of tenure for tenants. We will also assure permanently affordable housing! [#affordableparkdale](#) [@cllrgordperks](#)



169 likes

3 DAYS AGO

[Log in](#) to like or comment.







7th FLOOR  
RESTAURANT

JAMESON  
GASKMATES



JAMESON  
GASKMATES & CRAFT BEER  
A PAIRING  
THAT'S WORTH  
PARKDALE.

AFFORDABLE  
HOUSING

**AFFORDABLE HOUSING NOW**

WIS  
PY  
AND  
LOVE

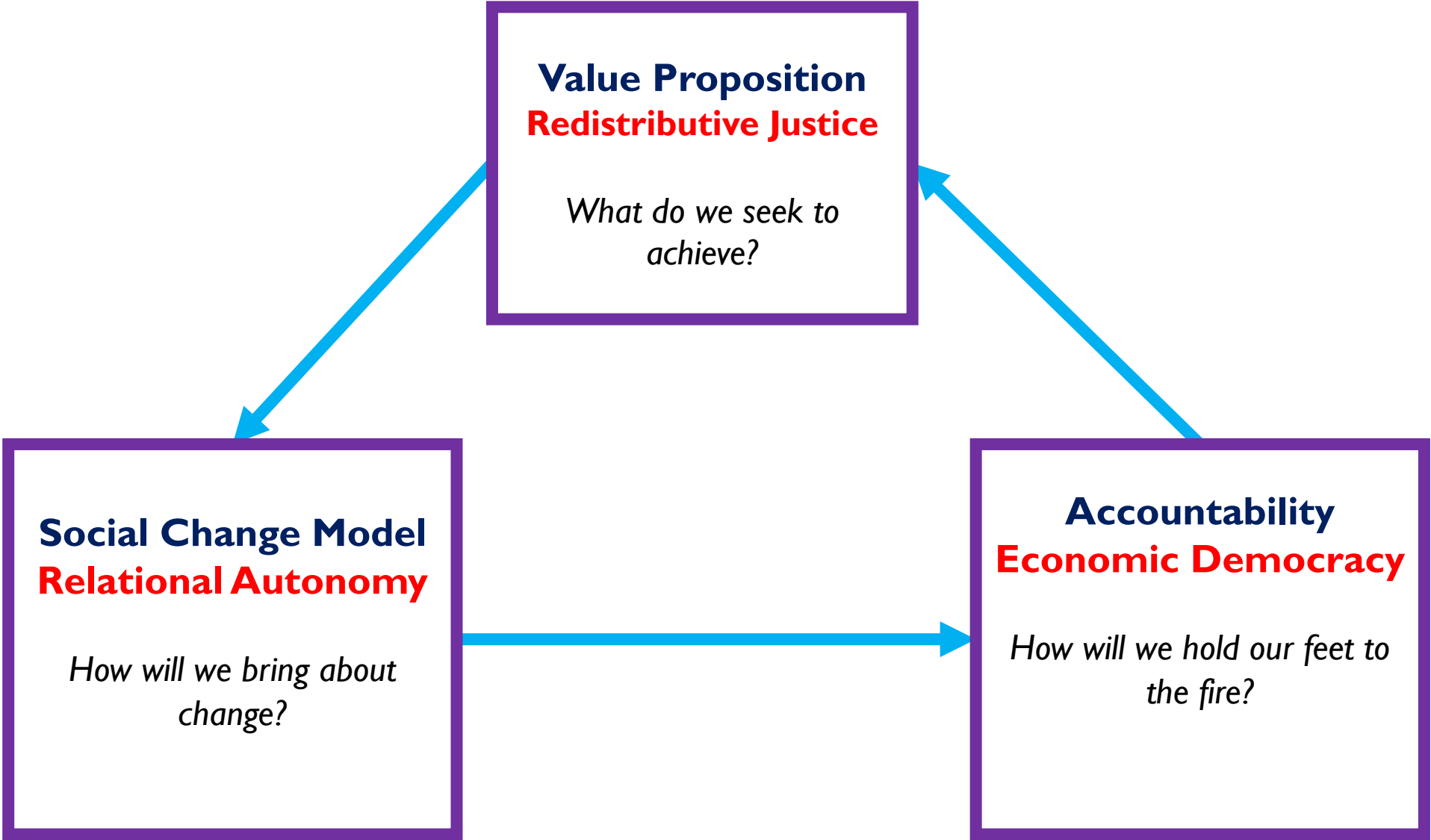
ME  
ALL  
SS

ERGE  
NO  
CIP

BE  
OUR  
TU

BE  
AT  
THE

# Social and Solidarity Economy Components



TRUTH



BRAVERY



HONESTY



WISDOM



RESPECT



LOVE



HUMILITY



Artist: CHANTAL LEBLANC & AMG School 2018